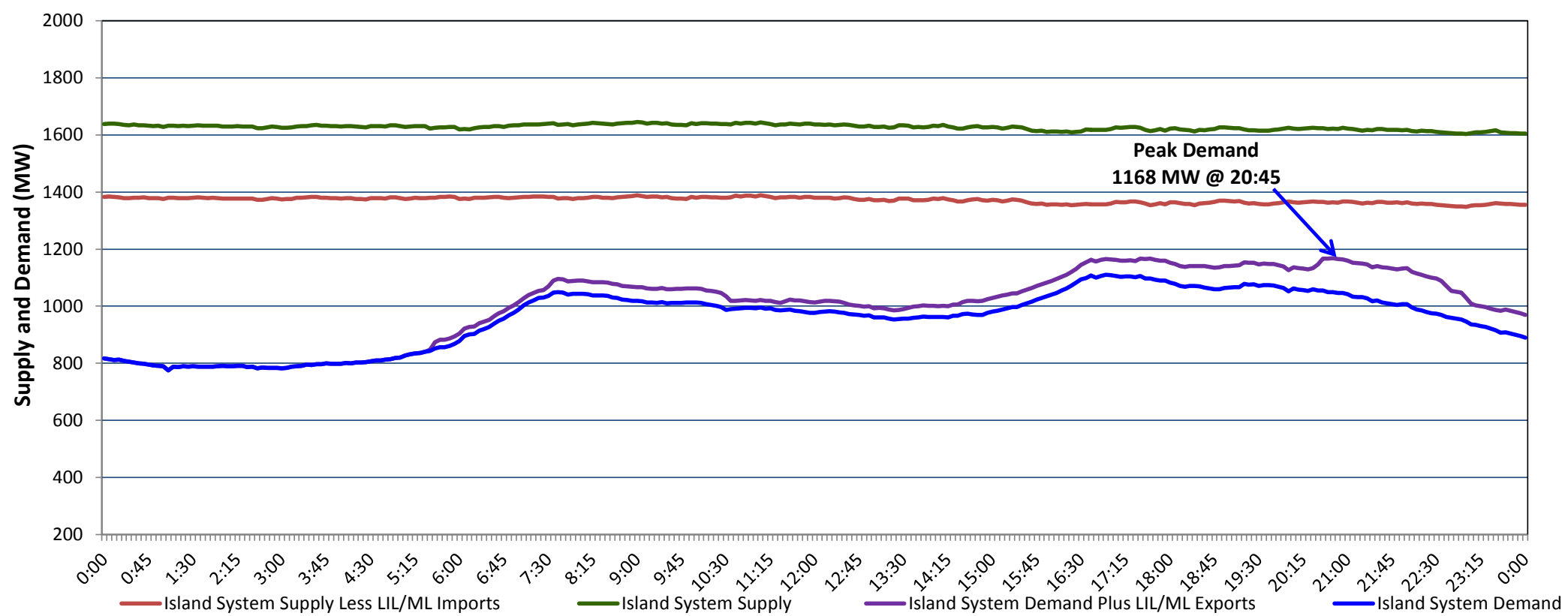


**Newfoundland Labrador Hydro (NLH)
Supply and Demand Status Report Filed Thursday, November 18, 2021**

**Section 1
Island Interconnected System Supply, Demand & Exports
Actual 24 Hour System Performance For Wednesday, November 17, 2021**



Supply Notes For November 17, 2021

1,2

- A As of 0804 hours, May 26, 2021, Holyrood Unit 1 unavailable due to planned outage (170 MW).
- B As of 0850 hours, July 25, 2021, Bay d'Espoir Unit 5 unavailable due to planned outage (76.5 MW).
- C As of 1006 hours, September 11, 2021, Holyrood Unit 3 unavailable (150 MW).
- D As of 2048 hours, November 05, 2021, Upper Salmon Unit unavailable (84 MW).
- E As of 0830 hours, November 12, 2021, Holyrood Unit 2 unavailable (170 MW).

**Section 2
Island Interconnected Supply and Demand**

Thu, Nov 18, 2021	Island System Outlook ³		Seven-Day Forecast	Temperature (°C)		Island System Daily Peak Demand (MW)	
				Morning	Evening	Forecast	Adjusted ⁷
Available Island System Supply: ⁵	1,620	MW	Thursday, November 18, 2021	0	-3	1,255	1,160
NLH Island Generation: ^{4,8}	1,040	MW	Friday, November 19, 2021	4	10	1,125	1,032
NLH Island Power Purchases: ⁶	110	MW	Saturday, November 20, 2021	9	2	1,115	1,022
Other Island Generation:	210	MW	Sunday, November 21, 2021	-1	0	1,215	1,121
ML/LIL Imports:	260	MW	Monday, November 22, 2021	-3	-1	1,215	1,121
Current St. John's Temperature & Windchill:	0 °C	-7 °C	Tuesday, November 23, 2021	2	4	1,175	1,081
7-Day Island Peak Demand Forecast:	1,255	MW	Wednesday, November 24, 2021	4	7	1,065	973

Supply Notes For November 18, 2021

3

- Notes:
1. Generation outages for running and corrective maintenance are included. These are not unusual for power system operations. They generally do not impact customer supply. The power system operators schedule outages to system equipment whenever possible to coincide with periods when customer demands are low and sufficient supply reserves are available. However, from time to time equipment outages are necessary and reserves may be impacted.
 2. Due to the Island system having no synchronous connections to the larger North American grid, when there is a sudden loss of large generating units there may be a requirement for some customer's load to be interrupted for short periods to bring generation output equal to customer demand. This automatic action of power system protection, referred to as under frequency load shedding (UFLS), is necessary to ensure the integrity and reliability of system equipment. Under frequency events have typically occurred 5 to 8 times per year on the Island Interconnected System and the resultant customer load interruptions are generally less than 30 minutes. With the activation of the Maritime Link frequency controller during the winter of 2018, UFLS events have occurred less frequently.
 3. As of 0800 Hours.
 4. Gross output including station service at Holyrood (24.5 MW) and improved NLH hydraulic output due to water levels (35 MW).
 5. Gross output from all Island sources (including Note 4).
 6. NLH Island Power Purchases include: CBPP Co-Gen, Nalcor Exploits, Rattle Brook, Star Lake, Wind Generation and capacity assistance (when applicable).
 7. Adjusted for curtailable load, market activities and the impact of voltage reduction when applicable.
 8. Due to limitations inherent in the design of combustion turbines, the output of combustion turbines may be reduced in the event that ambient temperatures exceed the threshold

**Section 3
Island Peak Demand Information
Previous Day Actual Peak and Current Day Forecast Peak**

Wed, Nov 17, 2021	Actual Island Peak Demand ⁸	20:45	1,168 MW
Thu, Nov 18, 2021	Forecast Island Peak Demand		1,255 MW

- Notes: 8. Island Demand / LIL / ML Exports (where applicable) is supplied by NLH generation and purchases, plus generation owned and operated by Newfoundland Power and Corner Brook Pulp & Paper (Deer Lake Power, DLP).